

current applications

- ◆ lighting controls
- ◆ thermostats
- ◆ refrigeration
- ◆ water heaters
- ◆ grill vents
- ◆ range
- ◆ dishwashers
- ◆ commercial grills
- ◆ HVAC

Relay and switches are commonly used in white goods applications. From controls to instrumentation, CIT Relay & Switch has a wide variety of relays and switches to suit these wide ranging applications.



J103 Series

The J103 Series relay conforms to FCC Part 68. Highly sensitive, the J103 offers low coil power consumption in a small, light-weight package with PC pin mounting. Dimensions are 12.5 x 7.5 x 10.0mm. Contact arrangement is 1C with coil voltage choices ranging from 3VDC up to 24VDC and coil power options of .15W or .20W. UL Agency approval is E197851.



J105D Series

With switching capacity up to 10A, the J105D Series relay offers a small, light-weight package. Low coil power consumption with high contact load, contact arrangement is 1A or 1C with voltage options from 3VDC up to 24VDC. Coil Power options are .20W or .45W. The J105D Series dimensions are 20.59 x 10.15 x 15.75mm. UL Agency approval is E197851.



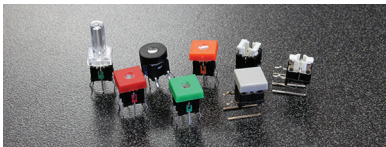
J107F Series

Up to 20 amps and F Class insulation is standard on the J107F Series relay. Light-weight and small in size, the J107F Series is PC pin mountable with contact arrangement options of 1A, 1B, or 1C. Coil voltage ranges from 3VDC up to 48VDC with coil power options of .36W, .45W or .80W. Dimensions are 19.0 x 15.5 x 15.3mm. UL Agency approval is E197851.



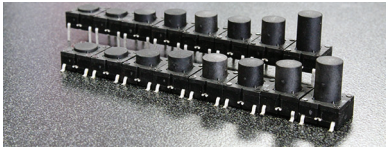
Tactile Switches

Often used in keyboards, keypads, instrumentation equipment, white goods, control panel applications, and virtually any consumer electronic device, tactile switches are small in size and are used to close an electrical circuit. Often used as an ON/OFF switch, our tactile switches are available in sealed and unsealed, and through-hole and surface mount termination for placement on PCB Boards with a large variety of sizes, actuation gram force and actuator lengths.



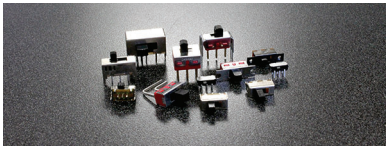
CL1200 Series

Offering surface mount, through-hole and right angle mounting, the CL1200 Series is a momentary SPST switch. Available with actuation force of $160 \pm 50\text{gf}$ and actuator travel of $0.25 \pm .1\text{mm}$, the CL1200 Series is available with square, square with LED hole, round, and round with LED hole actuator styles in a multitude of colors. Bi-color LED options are red, green, yellow, blue, white, orange and RGB. Optional frames in round and square are available too.



ME Series

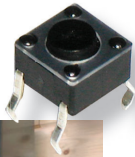
The ME Series is an IP67 process sealed tactile switch offering both through-hole and surface mount options with a 350Gf actuation force. With actuator and housing of PA6T Polyamide and silver plated stainless steel dome contact, the ME Series uses a silicon rubber internal seal providing truly sealed, one piece construction. Actuator color is standard black; contact factory for additional color options.



Slide Switches

A slide switch is an electromechanical switch that is defined by its method of operation, using a slider that moves from the open (off) position to the closed (on) position. With ultra-miniature, miniature and standard sizes, CIT slide switches are used on panel mount and surface mount applications. Available up to 5A, function ranges from SPDT up to 4P3T, with the options of right angle mounting and choices of actuator lengths. Most common applications of a slide switch includes consumer electronics, computer peripherals, industrial controls, and test equipment, among many others.





CIT Relay & Switch manufactures a broad array of RoHS compliant electromechanical automotive, telecom, security, industrial and HVAC relays and switches.

Thank you for giving CIT Relay & Switch the opportunity to demonstrate why so many are joining our growing list of satisfied customers — customers who have come to rely on the service and quality provided by CIT Relay & Switch.



14680 James Road
 Rogers, MN 55374 USA
 763.535.2339
 sales@citrelay.com